



MAURITIUS ROAD GREENWICH SE10

PRICE £320,000 FREEHOLD

Located close to the River Thames this delightful three bedroom Victorian terraced house offers spacious and well presented accommodation throughout with character features to boot. An internal viewing is highly recommended.

- Three Bedrooms
- Open Plan Living/Dining Room
- Fitted Kitchen
- White Bathroom Suite
- 30' Garden
- Neutral Decor

OPEN 7 DAYS

Residential Sales, Lettings & Commercial Estate Agents

johnpayne.com

Branches at Blackheath Village, Greenwich, Lee & Westcombe Park

These particulars are believed to be correct, but their accuracy is not guaranteed and they do not constitute an offer or form part of any contract. John Payne and its employees have no authority to make any representation or give any warranty in relation to this property.

Mauritius Road, Greenwich, SE10 0EH

ENTRANCE

Panelled hardwood front entrance door leading directly into the open plan:-

LIVING/DINING ROOM

22'4 x 14' max narrowing to 11'5 Twin sash windows to front, coved ceiling, Victorian cast iron fireplace to chimney breast with built-in alcove cupboards and book shelves above. Wall light, two radiators, French doors leading to the garden. Staircase up to first floor. Under stairs storage cupboard also housing utility meters. Open access to kitchen.

KITCHEN

9' x 8'2 Built-in four burner stainless steel gas hob with split level stainless steel electric oven, tiled splash backs, part stainless steel and wood work surfaces. Double bowl, double drainer, stainless steel sink unit with mixer tap, plumbing for washing machine, space for fridge/freezer and tumble dryer. Hand built cupboards, tiled flooring, inset spot lights. Door to:-

BATHROOM

8'2 x 7' Three piece white suite comprising low level WC, pedestal wash hand basin, panelled bath with mixer and fixed shower head, local tiling, ceramic tiled flooring, stain glass window to rear, encasement window to side, chrome radiator towel rail, part pine and glazed access door.

STAIRS AND LANDING

Fitted carpet, coved ceiling, radiator, access to loft with retractable ladder, doors to three bedrooms.

MASTER BEDROOM

14'2 x 11'3 Twin sash windows to front, built-in alcove wardrobe cupboard and shelving to opposite alcove, fitted carpet, radiator, coved ceiling, pine panelled access door.

BEDROOM 2

11'2 x 8'11 Casement window to rear, coved ceiling, fitted carpet, radiator, painted panelled access door.

BEDROOM 3

9' x 8'6 Casement window to side, coved ceiling, fitted carpet, radiator, painted panelled access door.

GARDEN

Approximately 30' With outside water supply, storage shed.

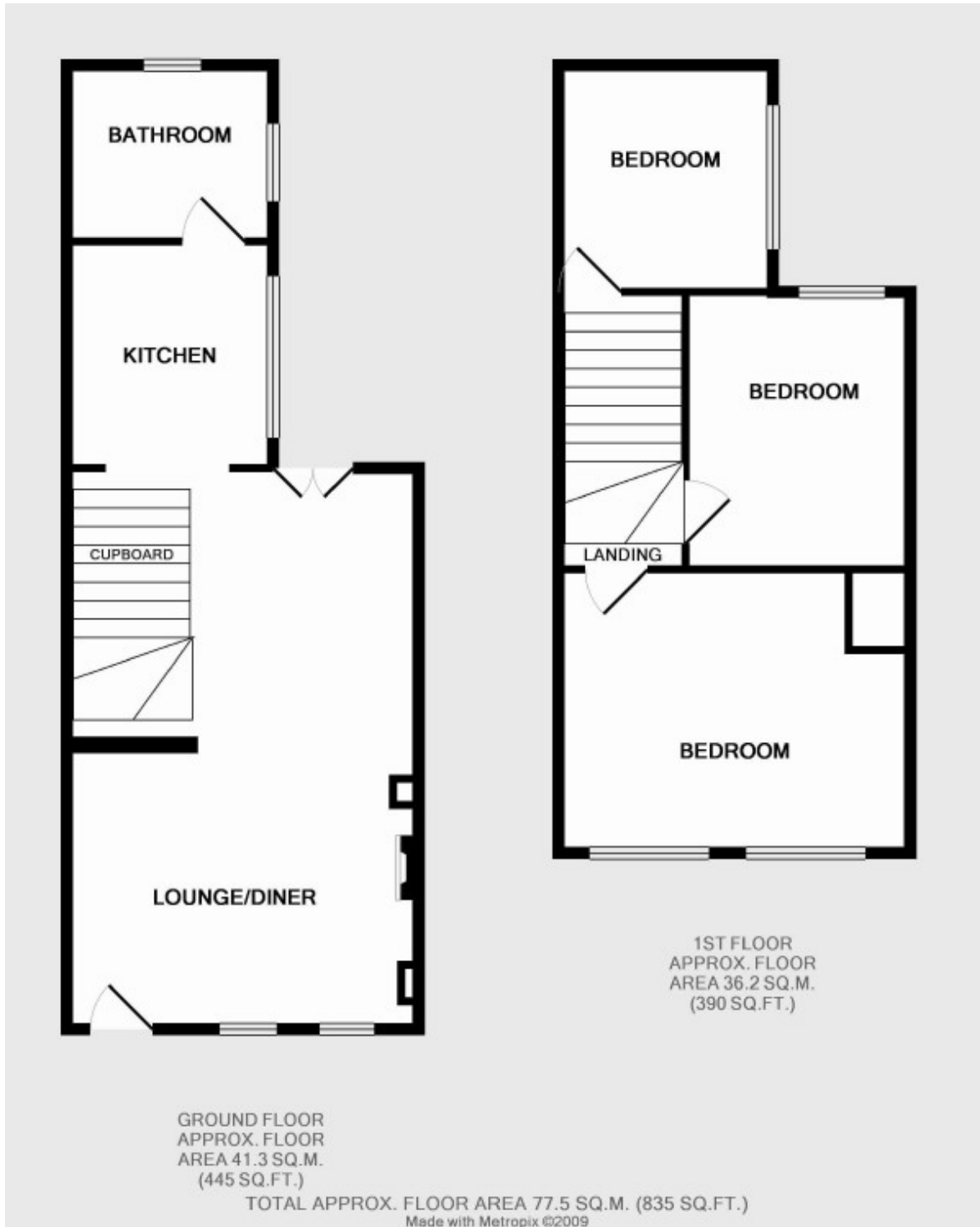
LOCAL AUTHORITY

London Borough of Greenwich

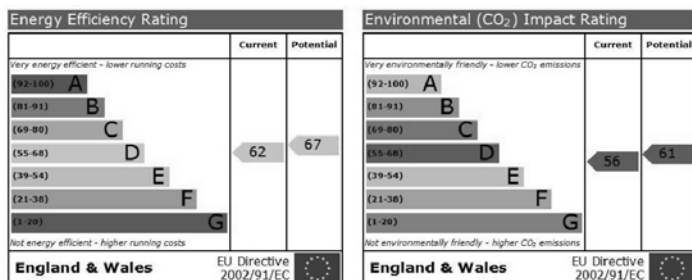
VIEWING

Viewing by prior appointment please through Vendors Sole Agents John Payne Greenwich Branch, 227 Greenwich High Road, SE10 8NB on 020 8858 9911 or e-mail us on greenwich@johnpayne.co.uk

Floorplan



Energy Performance Certificate



Property Descriptions

Whilst every care has been taken in the preparation of these particulars we have not examined the title documents or tested any apparatus or other services. All measurements, areas and distances are approximate and the appearance of an item in any photograph does not imply that it forms part of the sale price. It should not be assumed that the property has all the necessary planning, building regulation or other consents and buyers are advised to rely on their own enquiries and investigations prior to making a commitment to purchase. These details were prepared subject to the vendor's approval.

Floor plans are intended for identification purposes only. They are not to scale and their accuracy cannot be guaranteed.

Additional Photos of Mauritius Road Greenwich SE10

